



## Rapid Repair of Industrial Floors

When time is money

Expensive downtimes  
minimised!

EXPERTISE  
FLOOR COATING







**MC's integrated fast-lay floor system enables you to start the repair job on Friday afternoon and get back to productive operations by Monday.**

- High-strength reprofiling: **MC-Floor Screed**
- Silent joint solutions: **MC-Floor Connect**
- Fast-lay high-performance coating: **MC-DUR TopSpeed**

# MC-Floor Screed

## Self-levelling mineral screed for perfectly flat fast-lay industrial floors

**With rapid setting and high durability among its attributes, the newly developed MC-Floor Screed industrial flooring system offers a reliable solution for the quick repair of heavy-duty industrial floors.**

**MC-Floor Screed 10** is a quick-hardening high-strength floor covering which, as a flow coating in layer thicknesses between 10 and 30 mm, serves to quickly repair highly stressed industrial floors. The single-component cementitious compound is easy to work with, can withstand high loads even in thin layers, and hardens with virtually no shrinkage or residual stress.

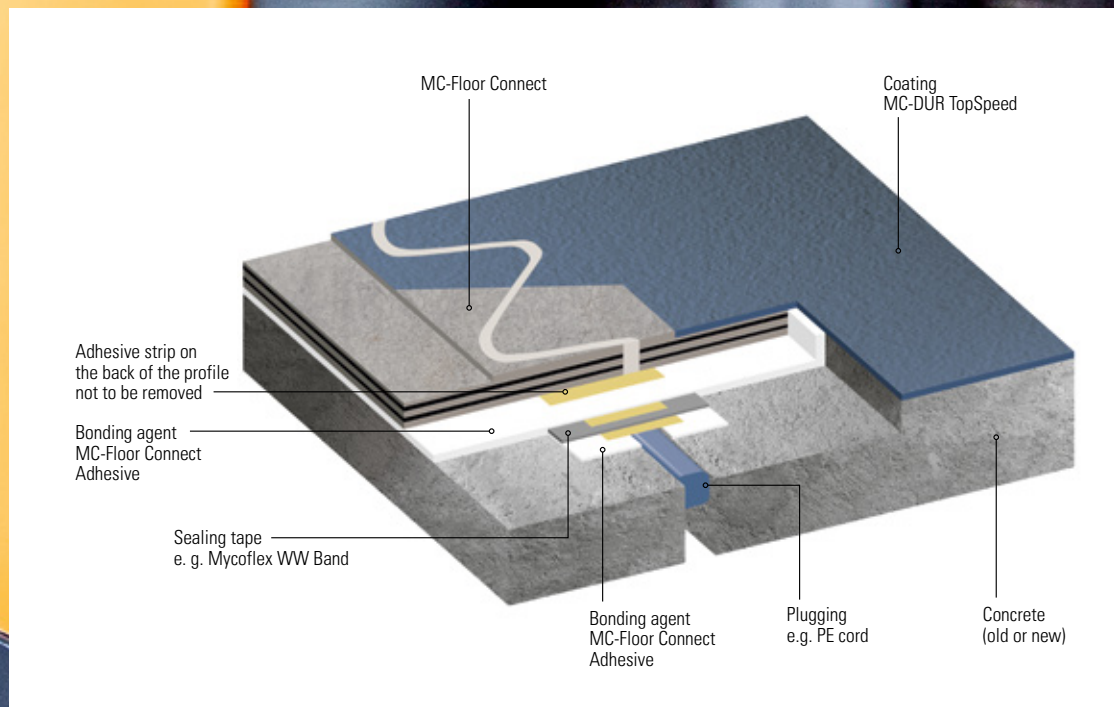
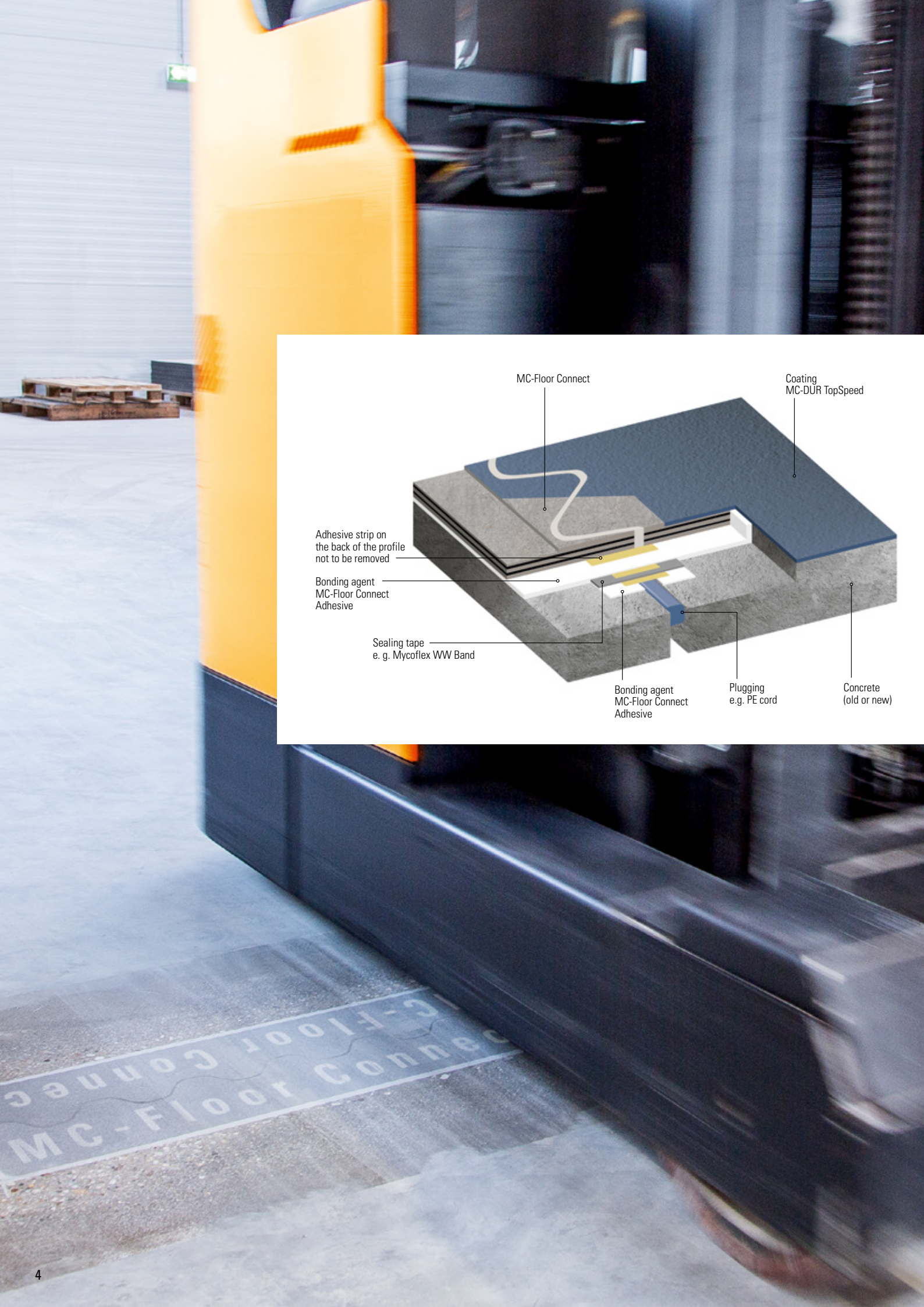
**MC-Floor Screed 25** is fast-reacting speciality binder for mixing with screed sand in the 0 – 8 mm range. The resultant mortar can be laid earth-moist in layer thicknesses between 25 and 70 mm and hardens quickly without shrinkage, making it ideal for levelling repairs.



MC-Floor Screed cures after 24 to 48 hours ready for overcoating with products from the MC-DUR range. The fresh MC-Floor Screed can be overworked on the same day with the high-speed coating MC-DUR TopSpeed, enabling the repair job to be completed from start to finish in just one weekend.

Products	To DIN 13813	Layer thickness	Accessible after	Overcoatable after
MC-Floor Screed 10	CT-C50-F10-A12	10 – 50 mm	2 hrs	24 hrs
MC-Floor Screed 25	CT-C70-F7-A9	25 – 70 mm	4 hrs	48 hrs







# MC-Floor Connect

## The silent joint solution

**Whether in industrial buildings, logistics centres, multi-storey car parks or retail environments, the constant noise and vibration caused by wheeled vehicles and handling equipment travelling over floor joints is a perennial problem.**

In addition to the nuisance value, the jolting can also damage to the on-board cargo. Vibration can also adversely affect the structural fabric of the building and the vehicle itself, not to mention the operator. At best, this unnecessary phenomenon increases the level of background noise. However, with the range of joint profiles under the MC-Floor Connect brand, a permanent solution to troublesome transitions is now to hand.

Once installed, MC-Floor Connect ensures the smooth transit of wheeled and castor-carried rolling traffic. The joint profiles are seamlessly integrated within the floor material to create a perfectly flush finish and so reliably eliminate shock loads and clatter – which also means delicate cargoes can be transported unimpaired.

- Quiet, vibration-free transit of rolling traffic over treated joints
- “Invisible” integration in existing substrates and coverings
- Short installation times, simple repair
- High mechanical strength
- Permanently corrosion-free



For rapid floor repair, MC-Floor Connect can be ground and levelled together with the fresh MC-Floor Screed after just a few hours and then coated with MC-DUR TopSpeed.



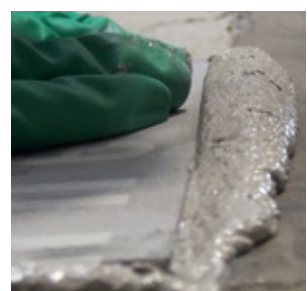
On-site cutting to size could not be simpler



Adhesive coating over the full area



Profile positioning



Adjustment





# MC-DUR TopSpeed

## Exceptionally hard-wearing coatings ready in a matter of hours

**With the MC-DUR TopSpeed system, industrial floors and exterior surfaces can be built up and coated within just a few hours, with full loadability after 48 hours.**

Offering a quick, reliable coating even under critical environmental conditions such as low temperatures down to 2 °C and high humidity, MC-DUR TopSpeed is a unique roller-applied coating capable of reliably delivering extraordinary performance.

The result is a mechanically highly resilient surface with excellent resistance to a broad range of chemicals and cleaning agents.

### **The MC-DUR TopSpeed secret: turning adversary into ally**

The MC-DUR TopSpeed system offers high resistance and durability with accelerated curing. All the system components use moisture from the substrate or ambient air to boost the curing process. This combination reaction produces exceptional adhesion on all common concrete and screed substrates, while ensuring exceptional wear and scratch resistance. The resin will cure at ambient temperatures as low as 2 °C, making the system ideal for jobs in damp, cold weather.

The reaction kinetics are similarly advantageous to applications in the hot summer months: even at temperatures up to 35 °C, MC-DUR TopSpeed will deliver the goods!

MC-DUR TopSpeed SC
■ Primer
■ Scratch coating (with sand filler)
■ Reaction resin mortar (with sand filler)

MC-DUR TopSpeed
■ Pigmented roller coating
■ Durable floor markings

- Workable at 2 °C to 35 °C
- Substrate moisture and air humidity actually aid application
- High wear and scratch resistance
- Resistant to UV and weathering
- Ideal for application over old coatings



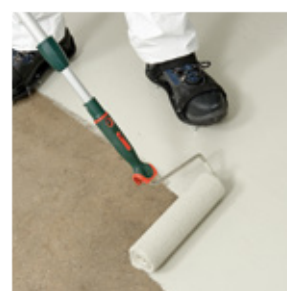
**Primer and bond coat**  
MC-DUR TopSpeed SC



**Filling cracks and crevices**  
MC-DUR TopSpeed SC  
with sand filler



**Scratch and levelling coat**  
MC-DUR TopSpeed SC  
with sand filler



**Heavy-duty roller coating**  
MC-DUR TopSpeed

## **Rapid repair of industrial floors**

**When time is money**

- High-strength reprofiling
- Silent joint solutions
- Fast-lay high-performance coating

MC-Bauchemie Müller GmbH & Co. KG  
Segment Flooring  
Am Kruppwald 1-8  
46238 Bottrop  
Germany

IN@mc-bauchemie.com  
mc-bauchemie.com



**BE SURE. BUILD SURE.**

Contact details

